



**VALLEY FORGE CHAPTER**  
**PENNSYLVANIA SOCIETY OF PROFESSIONAL ENGINEERS**  
**P.O. BOX 585 WORCESTER, PA 19490-0585**  
**www.pspe.org/valleyforge**

## **THE COMPASS**

**Volume 44, No. 6 – May/June/July 2010**

### **PRESIDENT'S MESSAGE**

*By Karen O'Connell Danko, P.E., VFC President*

As we were wrapping up the 2009-2010 year for the Valley Forge Chapter with our annual golf outing, the Pennsylvania Legislature was making waves in our professional community by enacting House Bill 975. As of the October 2009 licensing renewal period, all professional engineers registered in the state of Pennsylvania are now required to accrue 24 professional development hours (PDH). Such news has created a flurry of emails and mailings along with a bit of confusion as to how to best meet these PDH requirements.

The good news is that PSPE has been anticipating the continuing education requirements for some time. This past year we offered several dinner meetings, which met the New York State requirements for continuing education. These hours can be counted toward the Pennsylvania requirements as well. Our 2010-2011 Board of Directors is anticipating providing as many technical dinner meetings as possible. The NSPE has many web seminars, some of which are free, that can be used to meet your PDH requirements at your own pace. These web seminars can be found at <http://www.nspe.org/Education/WebSeminars/index.html>.

I hope that you all are enjoying a wonderful summer and thank you for the opportunity to be your President. I look forward to a year of the Valley Forge Chapter under the leadership of Kristin Norwood, P.E. and our devoted Board of Directors.

### **MEETING SCHEDULE**

August 3, 2010

**VFC Summer Planning Session**, Contact Kristin Norwood, P.E.  
(knorwood@trafficpd.com) if interested in being involved!

### **Follow PSPE VFC online!!!!!!**

Keep up to date on Chapter events and happenings by following us online at the following networking sites.

Facebook: <http://www.facebook.com/home.php?#!/group.php?gid=123650727656914&ref=ts>

LinkedIn: <http://www.linkedin.com/groups?home=&gid=1916635&trk=anet ug hm>

Visit the VFC PSPE website ([www.pspe.org/valleyforge](http://www.pspe.org/valleyforge)) often for updates on upcoming events.

## **Engineer, Land Surveyor and Geologist Registration Law (Continuing Education Provisions)**

### **Section 2. Definitions.**

As used in this act –

\*\* \*

(o) "Activity" shall mean any qualifying activity with a clear purpose and objective which will maintain, improve or expand the skills and knowledge relevant to a licensee's professional practice. (p)

**NATIONAL SOCIETY OF PROFESSIONAL ENGINEERS**

“College or unit semester hour” or “college or unit quarter hour” shall mean credit for courses in programs approved by the Accreditation Board of Engineering and Technology or the National Association of State Boards of Geology or other related college courses.

(q) “Continuing education unit” shall mean a unit of credit customarily used for continuing education courses. (r) “Course” shall mean any qualifying course with a clear purpose and objective which will maintain, improve or expand the skills and knowledge relevant to a licensee’s professional practice.

\*\* \* (t) “Professional development hour” or “PDH” shall mean fifty minutes of instruction or presentation relevant to professional practice or any equivalent. \*\* \*

#### **Section 4.5. Continuing Professional Competency Requirements.**

(a) In order to safeguard life, health and property and to promote the public welfare, the practice of professional engineering, professional land surveying and professional geology in this commonwealth requires continuing professional education. (b) Each licensee shall be required to meet the continuing professional competency requirements of this section as a condition for licensure renewal. Continuing professional competency obtained by a licensee should maintain, improve or expand skills and knowledge obtained prior to initial licensure, including law and ethics applicable to the profession, or develop new and relevant skills and knowledge. No credit shall be given for a course in practice building or office management.

(c) Each licensee shall be required to obtain twenty-four PDH units during the biennial renewal period. If a licensee exceeds the requirement in any renewal period, a maximum of twelve PDH units may be carried forward into the subsequent renewal period. PDH units may be earned as follows:

(1) Successful completion of college courses relevant to professional practice. (2) Completion of continuing education courses relevant to professional practice. (3) Completion of correspondence, televised, videotaped and other short courses or tutorials relevant to professional practice. (4) Completion of seminars, employer-sponsored courses, workshops or professional or technical presentations made at meetings, conventions or conferences relevant to professional practice.

1(5) Teaching, presenting or instructing in any of the activities listed in clauses (1), (2), (3) and (4). (6) Authoring published papers, articles or books relevant to professional practice. (7) Obtaining patents relevant to professional practice.

(d) (1) Except as provided in clause (2), units of other types of credit shall be converted to PDH units as follows:

(i) One college or unit semester hour shall equal forty-five PDH units. (ii) One college or unit quarter hours shall equal thirty PDH units. (iii) One continuing education unit shall equal ten PDH units. (iv) One hour of professional development in course work, seminars or professional, technical presentations made at meetings, employer-sponsored courses, conventions or conferences shall equal one PDH unit.

(v) Each published paper, article or book shall equal ten PDH units.

(vi) Each patent obtained shall equal ten PDH units. (2) Teaching any of the activities listed in clause (1)(i), (ii), (iii) and (iv) shall equal double the amount of PDH units provided for in those subclauses.

Teaching credit shall be awarded for teaching a course or seminar but shall not be awarded to full-time faculty members in the performance of their duties at their employing institutions.

(e) The board shall not require courses to be preapproved. The board may preapprove course providers. The board shall have final authority regarding approval of courses, credit, PDH value for courses and other methods of earning credit. Credit determination for activities listed in subsection (d)(1)(v) and (vi) shall be the responsibility of the licensee. The board shall accept credits earned in other jurisdictions if the activity otherwise complies with this section.

(f) The licensee shall be responsible for maintaining records to be used to support credits claimed.

Required records shall include all of the following:

(1) A log showing the type of activity claimed, sponsoring organization, location, duration, instructor’s or speaker’s name and PDH credits earned. (2) Attendance verification records in the form of completion certificates or other documents supporting evidence of attendance.

- (g) (1) A licensee may be exempt from the requirements of this section for any of the following reasons:
- (i) A licensee serving on temporary active duty in the armed forces of the United States for a period of time exceeding one hundred twenty consecutive days in a year shall be exempt from obtaining the professional development hours required during that year.
  - (ii) A licensee experiencing physical disability, illness or other extenuating circumstances as reviewed and approved by the board may be exempt. Supporting documentation must be furnished to the board.
- (2) An individual applying for initial licensure and registration shall be exempt from the requirement set forth in subsection (a) for the licensure period immediately following initial licensure and registration.
- (h) As part of the process to reactivate a licensee, a licensee must obtain all delinquent PDH units, except that under no circumstances shall a licensee be required to obtain more than the biennial renewal requirement.

**Delaware Valley Science Fairs 2010**

*Tony Dougherty, P.E. – Past President*

Another year goes by and another Delaware Valley Science Fair was held at the Greater Valley Forge Expo Center in Oaks, PA. As usual, the entries in the fair never cease to amaze us with their ingenuity and intelligence. This year the judging was completed by board members, Jim Thompson, Tony Dougherty, and Anthony Handley. As in years past, the event consists of 5 fairs spanning the grade levels, 12<sup>th</sup>, 11<sup>th</sup>, 10<sup>th</sup>, 9<sup>th</sup>, and one fair for grades 6<sup>th</sup> through 8<sup>th</sup>. Each fair (grade level) was reviewed separately and the winner in each grade level received the Valley Forge Chapter award for engineering achievement. For the high school fair levels, a second prize for innovative engineering was awarded. The winners of these awards are as follows:

Fair	Prize	Project	Student
<b>12th Grade</b>	<b>1st</b>	<b>Solar Powered Water Remediation</b>	<b>Kelsey Wheeler – Moorestown, NJ</b>
	2 <sup>nd</sup>	Dampening Control on Projectile Accuracy	Michael Roche – Middletown, NJ
<b>11th Grade</b>	<b>1st</b>	<b>Glass Bone Implants</b>	<b>Raina Jain – Bethlehem, PA</b>
	2 <sup>nd</sup>	Engineering Composite Materials for the Future	Alexander Shaffer – Nazareth, PA
<b>10th Grade</b>	<b>1st</b>	<b>Harvesting Energy from a Rocking Buoy</b>	<b>Alan Wu – Audubon, PA</b>
	2 <sup>nd</sup>	Effect of Infrared Light on Heating of Water by a Parabolic Solar Reflector	Bryan Wang– Marlboro, NJ
<b>9th Grade</b>	<b>1st</b>	<b>Homemade Microbial Fuel Cell</b>	<b>Brendan Betts – Easton, PA</b>
	2 <sup>nd</sup>	Study of Redundancy in Truss Bridges	Eric Todd - Audubon, PA
<b>6th-8th Grade</b>	<b>1st</b>	<b>Arrangement of Natural Materials to Effectively Filter Water</b>	<b>Michelle Moffa – Linwood, NJ</b>

Congratulations to all of this year’s winners. Let’s all hope that these promising young students continue to pursue engineering as their interest, career choice, and/or area of study. If anyone is interested in judging next year, please don’t hesitate to contact Tony Dougherty, P.E.

## 2010 Valley Forge Chapter Golf Outing

*Tony Dougherty, P.E. – Past President*

On May 21, 2010, Members of the PSPE Valley Forge Chapter and the State Committee hit the links at Jeffersonville Golf Course for the second annual Valley Forge Chapter Scholarship Golf Outing. The weather was beautiful compared to last year and everyone had a great time. In addition, the outing was successful in raising money to fund our Scholarship Program. We are also happy to hold this outing in conjunction with the State Board Meeting so that we could all get together to network and catch up with each other. At the end of the day, Board Member Jim Thompson's foursome came up the winners at 8 under par followed closely by foursome of the VFC Officers Tony Dougherty, Nate Zipay, Kristin Norwood and Sponsor Bryan Minner.



The complete list of winners is as follows:

Low Score:

**Jim Thompson**  
**Chris Thompson**  
**Pete Smith**  
**Wayne Swift**

Long Drive (approx 330 yds):

**Nate Zipay**

Closest to the Pin:(Approx 4')

**Wayne Swift**

**“No Paul, Our fairway is over there!!!”**

Also, this outing would not have been success without the help of our generous sponsors, listed below:



**Traffic Planning and Design, Inc.**  
**First Presbyterian Church in Germantown**  
**ACF Environmental**  
**Minner and Company, P.C.**  
**Ridgway's**  
**Sly Fox Beer and Restaurant**  
**McMahon Associates, Inc.**  
**Robert E. Blue Consulting Engineers, P.C.**  
**Citizen's Bank**  
**Kristin Norwood, P.E.**  
**Sly Fox Beer and Restaurant**  
**Golf USA**  
**Merck**

Thanks again for you participation!

In addition, after the outing banquet, Walter Poplawski, P.E. – PSPE President, installed the incoming Valley Forge Chapter Officers. Thanks Walter!!!



**2010-2011 Chapter Officers and Board of Directors**

President	Kristin Norwood, P.E.	knorwood@trafficpd.com
President-Elect	Chad Camburn, P.E.	camburn@Bursich.com
Vice President	Kurt Leininger, P.E.	kurt.leininger@atcassociates.com
Treasurer	Michael Fischer, P.E.	michaelfischer@comcast.net
Secretary	Dan Humes, EIT	dhumes@robertblue.com
State Director	Paul Dugan, P.E.	pauldugan@comcast.net
Past-President	Karen O'Connell Danko, P.E.	karen.danko@gmail.com
Chapter Director	Anthony Dougherty, P.E.	adougherty@trafficpd.com
Chapter Director	Jim Thompson, P.E.	Jthomp9121@aol.com
Chapter Director	Anthony Handley, EIT	anthonyhandley@comcast.net
Chapter Director	Lindsay Musselman, E.I.T.	lindsay.musselman@merk.com
Chapter Director	Nate Zipay, E.I.T.	nzipay@trafficpd.com
Chapter Director	Bruce Rhoades, P.E.	

## 2009-2010 VFC Committees

(Subject to revision at Summer Planning Meeting)

<b>Committee</b>	<b>Primary</b>	<b>Secondary</b>
Audit	Jim Thompson, PE	Kurt Leininger, PE
Awards	Lindsay Musselman, EIT	Kristin Norwood, PE
By-Laws	Kurt Leininger, PE	Paul Dugan, PE
Engineers Week	Tony Dougherty, PE	Lindsay Musselman, EIT
Ethics	Paul Dugan, PE	Mike Fisher, PE
Legislative/Gov't	Paul Dugan, PE	Anthony Handley, EIT
Mathcounts	Karen Danko, PE	Dan Humes, EIT
Membership	Lindsay Musselman, EIT	Karen Danko, PE
Nominating	Tony Dougherty, PE	Kristin Norwood, PE
Programs	Chad Camburn, PE	Karen Danko, PE
Publications	Karen Danko, PE	Tony Dougherty, PE
Scholarship	Lindsay Musselman, EIT	Chad Camburn, PE
Science Fair	Tony Dougherty, PE	Jim Thompson, PE
Web Site	Anthony Handley, EIT	Mike Fisher, PE
<b>Practice Division</b>	<b>Primary</b>	
PEPP (Private Practice)	Paul Dugan, PE	
PEC (Construction)	Kurt Leininger, PE	
PEG (Government)	Paul Dugan, PE	
PEI (Industry)	Lindsay Musselman, EIT	
PEE (Education)	Karen Danko, PE	



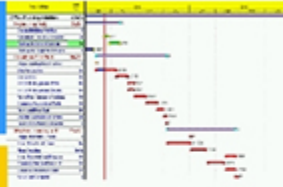
## The ENC Group, LLC

### Engineers and Consultants

Project Management, Engineering & Design and Construction Services.

#### Project and Construction Management

Scheduling Plant Outages  
Critical Equipment Replacement  
Feasibility Studies and Cost Analysis



#### Engineering and Design

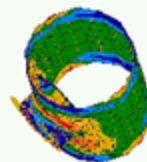
Mechanical  
Piping & Vessels  
Boilers / Cooling Towers  
Industrial Ventilation  
Materials Handling  
Bulk Storage and Transfer Systems  
Structural  
Equipment Foundations  
Structural Framing  
Industrial Buildings  
Electrical  
Power Wiring and Controls  
Short Circuit Studies  
Breaker Coordination



#### Construction Services

Construction Management  
Project and Field Engineering  
Owner's Representative

The ENC Group, LLC - Certified DBE  
50 Fir Drive, Richboro PA 18954  
Contact: Francis Stanton, Jr. PE  
(T) 215-497-1231 (F) 215-497-1232  
Email: [fjstanton@cs.com](mailto:fjstanton@cs.com)



## MILLENNIUM ENGINEERING, P.C.

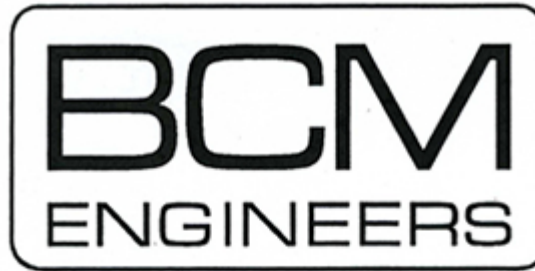
TELECOMMUNICATIONS CONSULTING ENGINEERS


Serving the Wireless Industry with RF Engineering

RF System Design  
Performance Engineering  
RF Safety FCC Compliance  
Intermodulation/Interference Studies  
Expert Witness and Zoning

Visit our web page or contact us to explore how we can assist with your RF requirements.

Office: 610-495-0690 Fax: 610-495-0691  
[www.millenniumengineering.net](http://www.millenniumengineering.net)



A Division of  **ATC**

- Wastewater Treatment Systems
- Water Supply and Treatment
- Stormwater Management
- Environmental Engineering

**Serving our clients  
from offices in**

**Plymouth Meeting, PA**

610-313-3100

**Clarks Summit, PA**

570-587-3339

**Freeland, PA**

570-636-3343

[www.atcassociates.com](http://www.atcassociates.com)





Celebrating 30 Years!

*Rodney P. Plourde, Ph.D., P.E. is pleased  
to serve as 2006-2007 Past President  
of Valley Forge Chapter, PSPE!*

---

*A full service transportation engineering firm specializing in:*

**Municipal Traffic Engineering Consultation  
Land Development Plan Reviews  
Roadway/Signal Plan Reviews  
Traffic Studies/Safety/Operations Analyses  
Transportation Planning/Traffic Calming  
Act 209 Impact Fee Studies/Financial Strategy Planning  
Land Survey  
Highway/Intersection/Structural Design  
Traffic Signal Design/Permitting & Closed-Loop Systems  
Construction Observation & Management  
Expert Witness Testimony**

---

*Serving Pennsylvania from:*

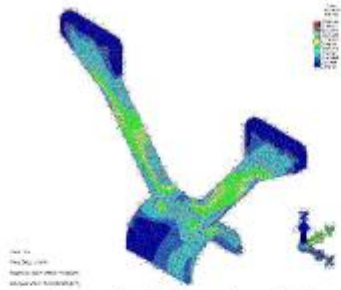
Fort Washington, Exton & Mechanicsburg, PA

*Also serving from:*

New Jersey, Florida & Massachusetts

**[www.mcmtrans.com](http://www.mcmtrans.com)**

**RAD Engineering is...**



**design and structural analysis,  
and...**



**mechanical and materials engineering consulting, and...**



**Serving the profession  
since 1987**



**controls, panel building, system integration, and...**



**materials handling and special machinery applications.**

**RAD ENGINEERING CORP.  
Robert A. Di Domizio, Jr. PE  
3125 Penn Avenue  
HATFIELD PA 19440  
bob@radeng.net 215-723-7297**



*TRAFFIC PLANNING*

*AND DESIGN, INC.*

*Bridge Design & Inspection*

*Transportation Planning*

*Construction Services*

*Roadway Design*



[WWW.TRAFFICPD.COM](http://WWW.TRAFFICPD.COM)

Pottstown, PA  
Harrisburg, PA

Lehigh Valley, PA  
Camden, NJ



**MINNER & COMPANY, P.C.**

***BRYAN J MINNER, CPA, PFS***

1829 New Holland Road, Suite 13

Reading, PA 19607

610-603-0500

[www.minnercpa.com](http://www.minnercpa.com)

**Small Businesses & Individuals Welcome**

**Accounting & Tax Services**

**QuickBooks® Support**

**Mutual Funds**

**IRAs**

Registered Broker-Dealers offering securities and other investment services through Waterhouse Financial Group, Member FDIC. A/CIP/C

500 Paul Blvd., Suite 200, Itasca, IL 60143, (430) 270-7200  
Minner & Company, P.C. and Waterhouse Financial Group, Inc. are independent companies.



**Celebrating  
It's 28th  
Anniversary  
1978-2006**

**CONSULTING ENGINEERS**

Engineering and Design  
Systems Integration  
Design Build  
Construction Management  
Control Systems

**FT. WASHINGTON OFFICE**

550 Pinetown Road  
Suite 400  
Fort Washington, PA 19034  
Phone (215) 542-8700  
Fax (215) 542-5652

**ORLANDO OFFICE**

7575 Dr. Phillips Blvd.  
Suite 200  
Orlando, FL 32819  
Phone (407) 352-3300  
Fax (407) 352-3301

Joseph F. Maida, PE  
President

Harvey D. Hnatuk, PE, FNSPE  
Vice President

ACCOMPLISHED  
**PROFESSIONAL ENGINEERS**  
PART TIME OPPORTUNITY

Automotive Engineers  
Chemical Engineers  
Electrical Engineers  
Industrial Engineers  
Mechanical Engineers  
Metallurgical Engineers

Opportunity for professional engineers with excellent communication and report writing abilities, to support our expert witness services.



Email resume with cover letter to: [pfleisher@dhfengr.com](mailto:pfleisher@dhfengr.com).

**Fleisher Forensics**

*Professional Engineers & Scientists*

[www.fleisherforensics.com](http://www.fleisherforensics.com)